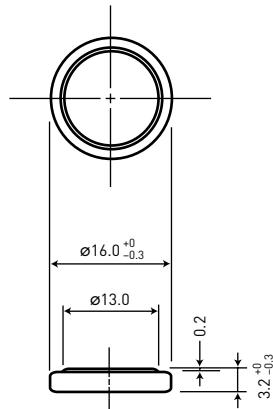


## 2 MANGANESE DIOXIDE LITHIUM BATTERIES (CR SERIES)

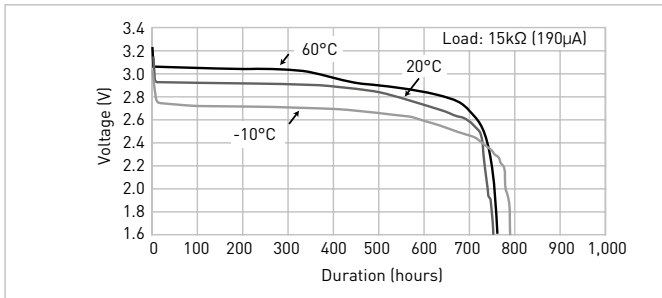
### CR-1632

#### DIMENSIONS (MM)

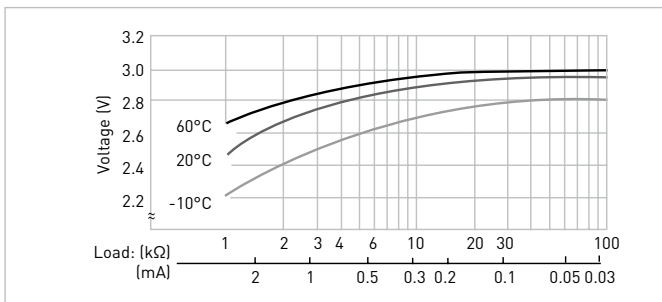


| Model number                       | CR-1632    |
|------------------------------------|------------|
| Nominal voltage (V)                | 3          |
| Nominal capacity (mAh)             | 140        |
| Diameter (mm)                      | 16.0       |
| Total height (mm)                  | 3.2        |
| Discharging temperature range (°C) | -30 to +60 |
| Weight (g)                         | 1.8        |

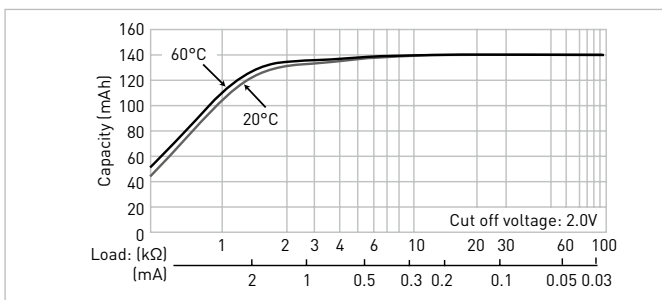
#### DISCHARGE TEMPERATURE CHARACTERISTICS



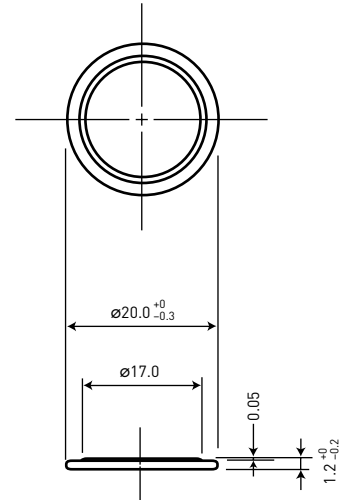
#### OPERATING VOLTAGE VS. DISCHARGE CURRENT\*1



#### CAPACITY VS. LOAD RESISTANCE

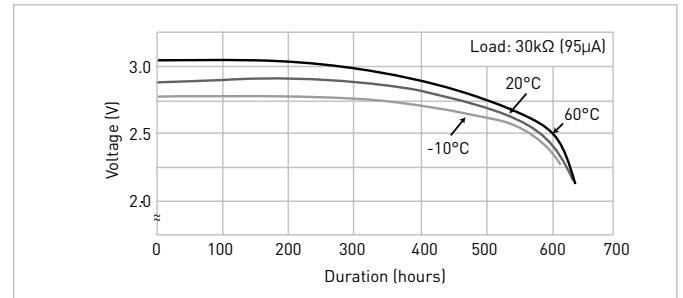


### CR-2012

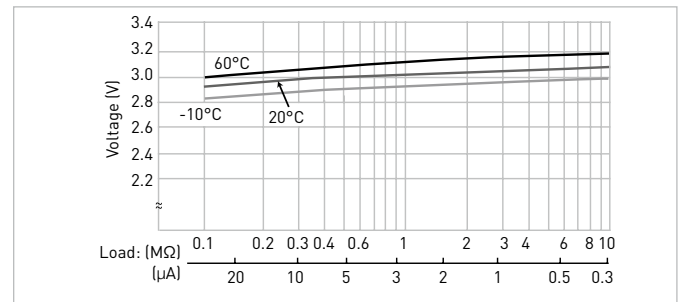


| Model number                       | CR-2012    |
|------------------------------------|------------|
| Nominal voltage (V)                | 3          |
| Nominal capacity (mAh)             | 55         |
| Diameter (mm)                      | 20.0       |
| Total height (mm)                  | 1.2        |
| Discharging temperature range (°C) | -30 to +60 |
| Weight (g)                         | 1.4        |

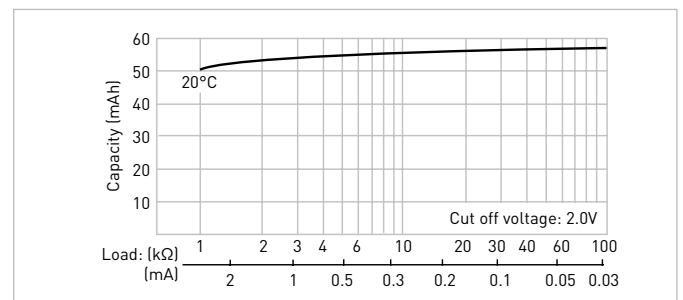
#### DISCHARGE TEMPERATURE CHARACTERISTICS



#### OPERATING VOLTAGE VS. DISCHARGE CURRENT\*1



#### CAPACITY VS. LOAD RESISTANCE



The data in this document are for descriptive purposes only and are not intended to make or imply any guarantee or warranty.

\*1 Voltage at 50% discharge depth.