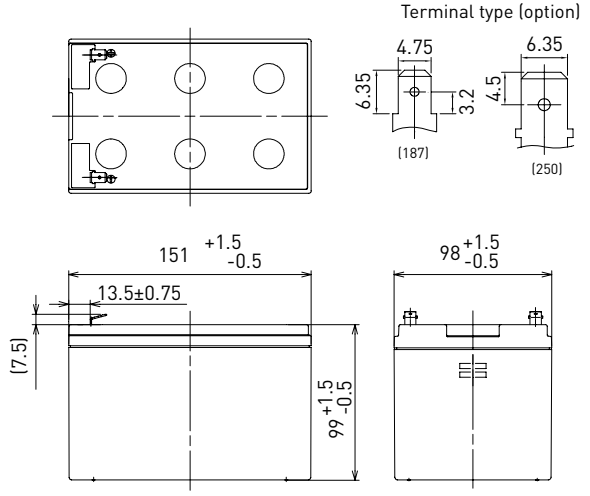


LC-PA1216P

DIMENSIONS (MM)



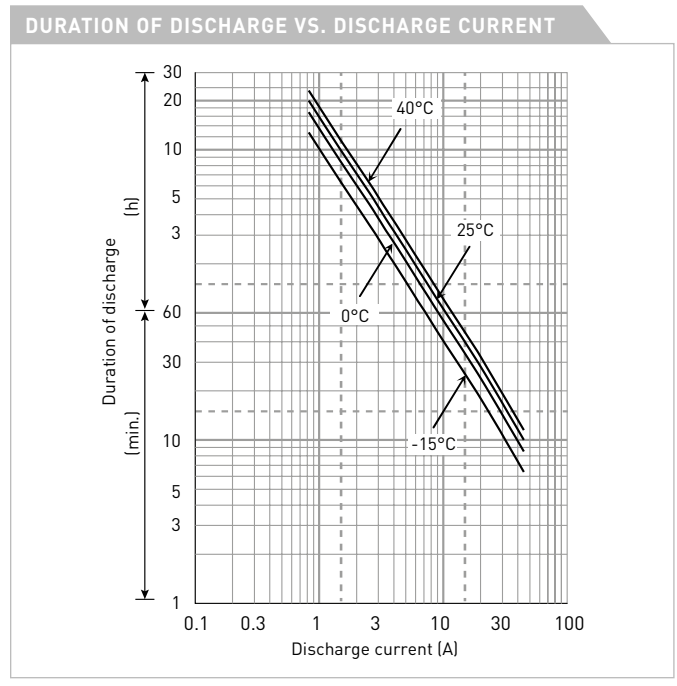
FOR STANDBY POWER SUPPLIES.  
 EXPECTED TRICKLE DESIGN LIFE: 10 – 12 YEARS AT 20°C  
 ACCORDING TO EUROBAT.



Contents indicated (including the recycle marking, etc.) are subject to change without notice.

Battery case resin: flame retardant (UL94 V-0)

SPECIFICATIONS		LC-PA1216P/P1
Name		LC-PA1216P/P1
Nominal voltage		12V
Nominal capacity (20 hour rate)		16Ah
Dimensions	Length	151mm
	Width	98mm
	Height	105mm
Approx. mass		4.10kg
Terminal		Faston 187/250
Capacity (25°C)	20 hour rate	16Ah
	10 hour rate	15Ah
	3 hour rate	13Ah
	1 hour rate	11Ah
Impedance		Fully charged battery (25°C) 13mΩ
Temperature dependency of capacity (20 hour rate)	40°C	102%
	25°C	100%
	0°C	85%
	-15°C	65%
Self-discharge (25°C)	After 3 month	91%
	After 6 month	82%
	After 12 month	64%



WATT TABLE (25°C)																(Wattage/battery)
Cut-off	3min.	5min.	10min.	15min.	20min.	30min.	45min.	1h	1.5h	2h	3h	4h	5h	6h	10h	20h
9.6V	850	716	445	339	277	201	151	124	91.9	73.1	52.8	41.2	34.5	29.7	19.0	10.2
9.9V	815	685	427	323	268	197	150	121	90.1	72.5	52.6	40.9	34.2	29.1	18.9	10.2
10.2V	760	640	417	307	260	193	144	117	85.4	68.5	50.3	40.1	32.8	28.4	18.1	9.81
10.5V	680	580	398	293	249	185	140	115	82.0	66.4	49.3	39.3	32.7	28.1	18.0	9.78
10.8V	590	520	350	281	238	178	131	106	76.5	59.2	45.7	36.3	29.9	26.0	16.8	9.16

AMPERE TABLE (25°C)																(Ampere/battery)
Cut-off	3min.	5min.	10min.	15min.	20min.	30min.	45min.	1h	1.5h	2h	3h	4h	5h	6h	10h	20h
9.6V	82.9	66.3	44.7	32.7	26.3	19.1	13.8	10.9	7.98	6.21	4.33	3.28	2.82	2.34	1.54	0.800
9.9V	76.5	62.2	43.8	32.5	25.9	18.9	13.7	10.8	7.82	6.17	4.31	3.26	2.79	2.33	1.53	0.800
10.2V	70.3	58.3	42.7	31.8	25.4	18.7	13.6	10.7	7.66	6.01	4.26	3.24	2.77	2.32	1.52	0.800
10.5V	62.3	52.2	39.5	29.6	24.2	18.3	13.4	10.5	7.50	5.80	4.20	3.22	2.75	2.31	1.51	0.800
10.8V	52.4	45.8	35.3	27.6	23.5	17.6	13.2	10.3	7.29	5.52	4.11	3.18	2.68	2.28	1.49	0.800

All mentioned values are average values

## LC-PA1216P

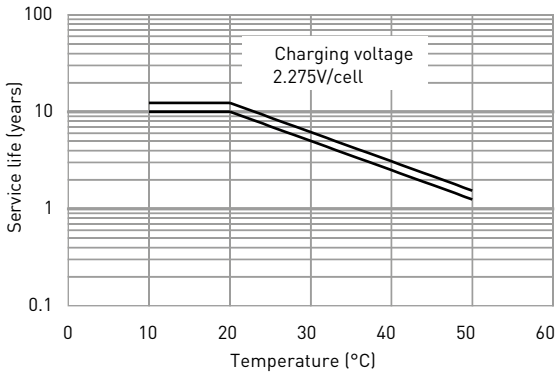
### CHARGING METHOD (25°C)

**Trickle use** Control voltage: 13.6V - 13.8V  
Initial current: 2.40A or smaller

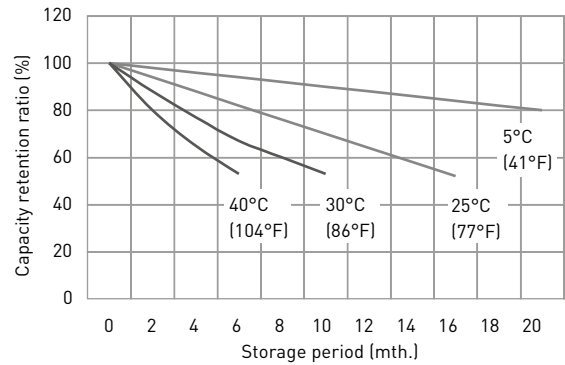
### CUT-OFF VOLTAGE

<b>Discharge current</b>	0.800A - 3.20A	3.20A - 8.00A	8.00A - 16.0A	16.0A - 32.0A	32.0A - 48.0A
<b>Cut-off voltage</b>	10.5V	10.2V	9.9V	9.3V	8.7V

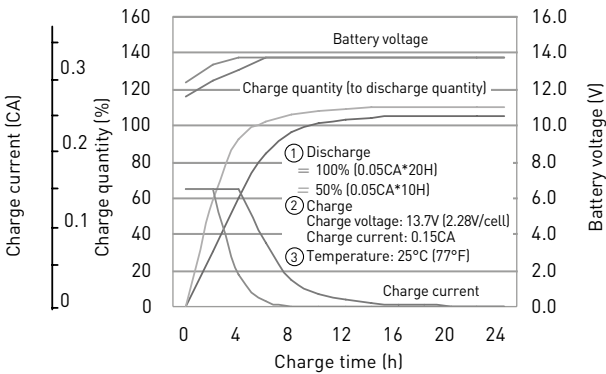
### INFLUENCE OF TEMPERATURE ON TRICKLE LIFE



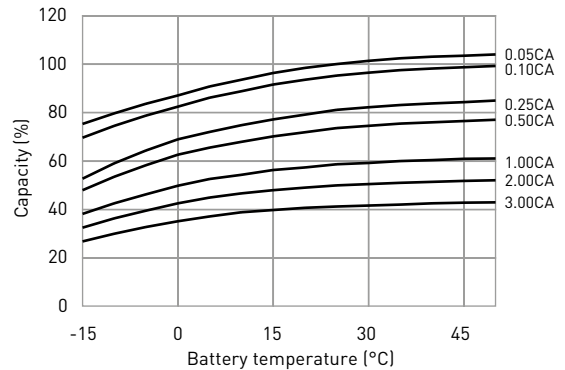
### RESIDUAL CAPACITY TEST RESULT



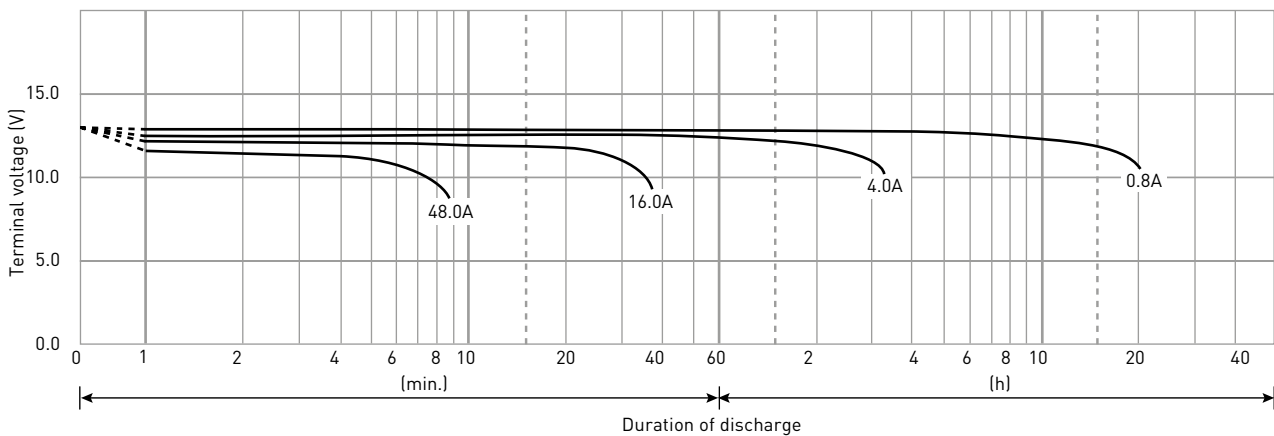
### CONSTANT-VOLTAGE CONSTANT-CURRENT CHARGE CHARACTERISTICS FOR TRICKLE USE



### DISCHARGE CAPACITY BY TEMPERATURE AND BY DISCHARGE CURRENT



### DISCHARGE CHARACTERISTICS



The data in this document are for descriptive purposes only and are not intended to make or imply any guarantee or warranty. Regarding handling and safety please consult our VRLA technical handbook chapter 1.